



2014/2015  
Viking Housewares



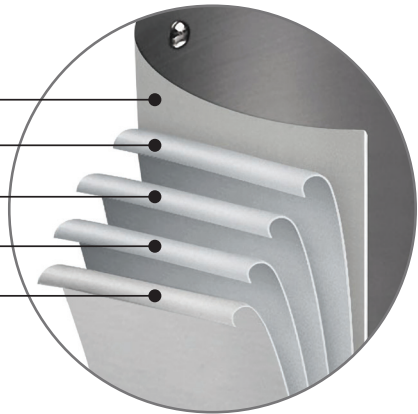


## Table of Contents

Viking Professional 5-Ply Satin Cookware . . . . .	1
Viking 3-Ply Mirror Cookware . . . . .	6
Viking Contemporary 3-Ply Mirror Cookware . . . . .	15
Viking Ceramic Nonstick Bakeware . . . . .	21
Viking Professional Steakhouse Style Knife Sets . . . . .	23
Viking Pressure Cooker . . . . .	24
About Clipper Corporation . . . . .	25

### VIKING PROFESSIONAL 5-PLY CONSTRUCTION

- 18/10 Stainless Steel Interior
- 1050 Aluminum Alloy Core
- 3004 Aluminum Alloy Core
- 1050 Aluminum Alloy Core
- Induction Capable Magnetic  
Stainless Steel Exterior



Please Note: Assortments, specifications and pricing are subject to change without notice.



## Viking® Professional 5-Ply Satin Cookware

Viking® Professional 5-Ply Satin Cookware uses commercial quality construction to deliver professional performance in the home. With an elegant satin finish, this premium line of cookware is specially handcrafted in the USA.

5-ply construction maximizes heat transfer and reduces energy usage by leveraging the conductivity of an aluminum core sandwiched between stainless steel. This combination of materials enables Viking cookware to deliver superior cooking performance. Each layer of metal is carefully selected for optimum performance and efficiency - stainless steel for durability and aluminum for conductivity.

The magnetic stainless steel exterior makes this cookware suitable for all stovetops, including induction. The core is made up of three layers of aluminum. Two layers of nearly pure 1050 aluminum bonded to a structural layer of 3004 aluminum that prevents warping. The aluminum core disperses heat quickly and evenly throughout the bottom and sides of the vessel. The non-reactive and non-porous interior layer of 18/10 high-grade stainless steel is an ideal cooking surface that is easy to clean and sanitize. Together, these five layers work in unison reducing the energy required to achieve desired cooking temperatures.

The 5-ply construction makes this versatile cookware stove, oven and grill friendly. Viking designed the signature stay-cool handles to be ergonomically friendly, making the cookware more comfortable to hold and maneuver. Backed by a lifetime warranty, Viking cookware will help you produce restaurant quality results at home.



## Viking Professional 5-Ply Satin, 10 Piece Set

4515-1S10S

Viking Professional 5-Ply Satin, 10 Piece Set

UPC: 840595101276

Country of Origin: USA

Set includes: 8 Qt. Stock Pot, 3.4 Qt. Sauté Pan, 3 Qt. Sauce Pan, 2 Qt. Sauce Pan, 10" Fry Pan & 8" Fry Pan

- Handcrafted in the USA
- Durable Stainless Steel Construction with Aluminum Alloy Core
- Non-Reactive & Non-Porous 18/10 Stainless Steel Interior
- Can Be Used on Any Cooking Surface, Including Induction
- Ergonomically Designed Cast Stainless Steel Handles Provide a Comfortable & Secure Grip
- Commercial Grade Riveted Handles with Solid Stainless Steel Rivets
- Nonstick Products Feature Eterna,<sup>®</sup> an Advanced PFOA Free Coating for Superior Release
- Oven & Dishwasher Safe
- Lifetime Warranty



**Made in USA • Lifetime Warranty**



## Viking Professional 5-Ply Satin, 7 Piece Set

**4515-1S07S**

Viking Professional 5-Ply Satin, 7 Piece Set

UPC: 840595101269

Country of Origin: USA

Set includes: 8 Qt. Stock Pot, 3.4 Qt. Sauté Pan, 2 Qt. Sauce Pan & 10" Fry Pan

- Handcrafted in the USA
- Durable Stainless Steel Construction with Aluminum Alloy Core
- Non-Reactive & Non-Porous 18/10 Stainless Steel Interior
- Can Be Used on Any Cooking Surface, Including Induction
- Ergonomically Designed Cast Stainless Steel Handles Provide a Comfortable & Secure Grip
- Commercial Grade Riveted Handles with Solid Stainless Steel Rivets
- Nonstick Products Feature Eterna,<sup>®</sup> an Advanced PFOA Free Coating for Superior Release
- Oven & Dishwasher Safe
- Lifetime Warranty



**Made in USA • Lifetime Warranty**



## Viking Professional 5-Ply Satin, Open Stock



**4015-1002S**  
Sauce Pan, 5-Ply Satin, 2 Qt.  
UPC: 840595101122  
Country of Origin: USA



**4015-1003S**  
Sauce Pan, 5-Ply Satin, 3 Qt.  
UPC: 840595101139  
Country of Origin: USA



**4015-1034S**  
Sauté Pan, 5-Ply Satin, 3.4 Qt.  
UPC: 840595101191  
Country of Origin: USA



**4015-1064S**  
Sauté Pan, 5-Ply Satin, 6.4 Qt.  
UPC: 840595101207  
Country of Origin: USA



**4015-1006S**  
Stock Pot, 5-Ply Satin, 6 Qt.  
UPC: 840595101146  
Country of Origin: USA



**4015-1008S**  
Stock Pot, 5-Ply Satin, 8 Qt.  
UPC: 840595101153  
Country of Origin: USA



## Viking Professional 5-Ply Satin, Open Stock



**4015-1034CS**  
Casserole, 5-Ply Satin, 3.4 Qt.  
UPC: 840595101245  
Country of Origin: USA



**4015-1064CS**  
Casserole, 5-Ply Satin, 6.4 Qt.  
UPC: 840595101252  
Country of Origin: USA



**4015-1018S**  
Fry Pan, 5-Ply Satin, 8"  
UPC: 840595101160  
Country of Origin: USA



**4015-1010S**  
Fry Pan, 5-Ply Satin, 10"  
UPC: 840595101177  
Country of Origin: USA



**4015-1012S**  
Fry Pan, 5-Ply Satin, 12"  
UPC: 840595101184  
Country of Origin: USA



**4015-1N18S**  
Fry Pan, Nonstick, 5-Ply Satin, 8"  
UPC: 840595101214  
Country of Origin: USA



**4015-1N10S**  
Fry Pan, Nonstick, 5-Ply Satin, 10"  
UPC: 840595101221  
Country of Origin: USA



**4015-1N12S**  
Fry Pan, Nonstick, 5-Ply Satin, 12"  
UPC: 840595101238  
Country of Origin: USA



## Viking® 3-Ply Mirror Cookware

Viking® 3-Ply Mirror Cookware is designed for the culinary enthusiast desiring professional quality results. Handcrafted in the USA, Viking cookware is beautifully polished to a mirror finish.

The 3-ply clad design combines three layers of metal to create one solid piece that is formed into the vessel. An induction capable stainless steel exterior is bonded to a layer of aluminum alloy and then finished with a final layer of high quality 18/10 stainless steel on the interior. The three-layer construction combines the durability of stainless with the superior conductivity of aluminum, delivering even heat distribution along the bottom and throughout the sides of the pan. With three layers of metal combined, the unique structure creates a comprehensive heat delivery system that requires less energy to both heat and maintain even temperature throughout the pan.

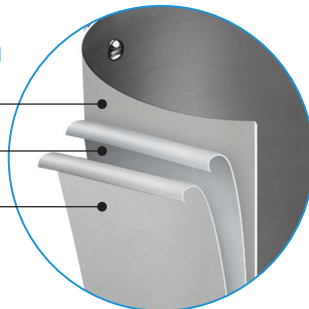
Viking stainless steel is non-reactive and features a non-porous surface so that it is easy to clean and sanitize. Holding and maneuvering the pan during cooking is made easier with our comfortable to hold, ergonomically designed, stay-cool handles. Backed by a lifetime warranty.

### VIKING 3-PLY CONSTRUCTION

18/10 Stainless Steel Interior

Aluminum Alloy Core for  
Even Heat Distribution

Induction Capable Magnetic  
Stainless Steel Exterior







## Viking 3-Ply Mirror, 14 Piece Set

**4513-2S14**

Viking 3-Ply Mirror, 14 Piece Set

UPC: 840595100804

Country of Origin: USA

Set includes: 8 Qt. Stock Pot, 6 Qt. Stock Pot, 6.4 Qt. Sauté Pan, 3.4 Qt. Sauté Pan, 3 Qt. Sauce Pan, 2 Qt. Sauce Pan, 12" Fry Pan & 10" Fry Pan

- Handcrafted in the USA
- Durable Stainless Steel Vessel with Aluminum Alloy Core
- 3-Ply Construction Transfers Heat Evenly Across the Bottom & Sides of Pan
- Magnetic Exterior Can Be Used on Any Cooking Surface, Including Induction
- Ergonomically Designed Stay-Cool Handles for Comfort & Balance
- Commercial Grade Stainless Steel Rivets & Handles
- Nonstick Products Feature Eterna,<sup>®</sup> an Advanced PFOA Free Coating for Superior Release
- Oven & Dishwasher Safe
- Lifetime Warranty



**Made in USA • Lifetime Warranty**



## Viking 3-Ply Mirror, 10 Piece Set

**4513-2S10**

Viking 3-Ply Mirror, 10 Piece Set

UPC: 840595100538

Country of Origin: USA

Set includes: 8 Qt. Stock Pot, 3.4 Qt. Sauté Pan, 3 Qt. Sauce Pan, 2 Qt. Sauce Pan, 10" Fry Pan & 8" Fry Pan

- Handcrafted in the USA
- Durable Stainless Steel Vessel with Aluminum Alloy Core
- 3-Ply Construction Transfers Heat Evenly Across the Bottom & Sides of Pan
- Magnetic Exterior Can Be Used on Any Cooking Surface, Including Induction
- Ergonomically Designed Stay-Cool Handles for Comfort & Balance
- Commercial Grade Stainless Steel Rivets & Handles
- Nonstick Products Feature Eterna,<sup>®</sup> an Advanced PFOA Free Coating for Superior Release
- Oven & Dishwasher Safe
- Lifetime Warranty



**Made in USA • Lifetime Warranty**



## Viking 3-Ply Mirror, 7 Piece Set

**4513-2S07**

Viking 3-Ply Mirror, 7 Piece Set

UPC: 840595100521

Country of Origin: USA

Set includes: 8 Qt. Stock Pot, 6.4 Qt. Sauté Pan, 2 Qt. Sauce Pan & 10" Fry Pan

- Handcrafted in the USA
- Durable Stainless Steel Vessel with Aluminum Alloy Core
- 3-Ply Construction Transfers Heat Evenly Across the Bottom & Sides of Pan
- Magnetic Exterior Can Be Used on Any Cooking Surface, Including Induction
- Ergonomically Designed Stay-Cool Handles for Comfort & Balance
- Commercial Grade Stainless Steel Rivets & Handles
- Nonstick Products Feature Eterna,<sup>®</sup> an Advanced PFOA Free Coating for Superior Release
- Oven & Dishwasher Safe
- Lifetime Warranty



**Made in USA • Lifetime Warranty**



## Viking 3-Ply Mirror, 5 Piece Starter Set

4513-2S05

Viking 3-Ply Mirror, 5 Piece Starter Set

UPC: 840595100514

Country of Origin: USA

Set includes: 6 Qt. Stock Pot, 3 Qt. Sauce Pan & 10" Fry Pan

- Handcrafted in the USA
- Durable Stainless Steel Vessel with Aluminum Alloy Core
- 3-Ply Construction Transfers Heat Evenly Across the Bottom & Sides of Pan
- Magnetic Exterior Can Be Used on Any Cooking Surface, Including Induction
- Ergonomically Designed Stay-Cool Handles for Comfort & Balance
- Commercial Grade Stainless Steel Rivets & Handles
- Nonstick Products Feature Eterna,<sup>®</sup> an Advanced PFOA Free Coating for Superior Release
- Oven & Dishwasher Safe
- Lifetime Warranty



**Made in USA • Lifetime Warranty**



## Viking 3-Ply Mirror, Open Stock



**4013-2002**  
Sauce Pan, 3-Ply Mirror, 2 Qt.  
UPC: 840595100156  
Country of Origin: USA



**4013-2003**  
Sauce Pan, 3-Ply Mirror, 3 Qt.  
UPC: 840595100163  
Country of Origin: USA



**4013-2034**  
Sauté Pan, 3-Ply Mirror, 3.4 Qt.  
UPC: 840595100309  
Country of Origin: USA



**4013-2064**  
Sauté Pan, 3-Ply Mirror, 6.4 Qt.  
UPC: 840595100323  
Country of Origin: USA



**4013-2006**  
Stock Pot, 3-Ply Mirror, 6 Qt.  
UPC: 840595100170  
Country of Origin: USA



**4013-2008**  
Stock Pot, 3-Ply Mirror, 8 Qt.  
UPC: 840595100293  
Country of Origin: USA



## Viking 3-Ply Mirror, Open Stock



**4013-2034C**  
Casserole, 3-Ply Mirror, 3.4 Qt.  
UPC: 840595100491  
Country of Origin: USA



**4013-2064C**  
Casserole, 3-Ply Mirror, 6.4 Qt.  
UPC: 840595101115  
Country of Origin: USA



**4013-2030SI**  
Steamer Insert, 3-Ply Mirror, 3 Qt.  
UPC: 840595101429  
Country of Origin: USA



**4013-2030DB**  
Double Boiler Insert, 3-Ply Mirror, 3 Qt.  
UPC: 840595101436  
Country of Origin: USA



**4013-2018**  
Fry Pan, 3-Ply Mirror, 8"  
UPC: 840595100347  
Country of Origin: USA



**4013-2010**  
Fry Pan, 3-Ply Mirror, 10"  
UPC: 840595100361  
Country of Origin: USA



## Viking 3-Ply Mirror, Open Stock



**4013-2012**  
Fry Pan, 3-Ply Mirror, 12"  
UPC: 840595100392  
Country of Origin: USA



**4013-2N18**  
Fry Pan, Nonstick, 3-Ply Mirror, 8"  
UPC: 840595100415  
Country of Origin: USA



**4013-2N10**  
Fry Pan, Nonstick, 3-Ply Mirror, 10"  
UPC: 840595100422  
Country of Origin: USA



**4013-2N12**  
Fry Pan, Nonstick, 3-Ply Mirror, 12"  
UPC: 840595100460  
Country of Origin: USA



## Viking 3-Ply Mirror, Open Stock



**4013-6008**  
Multi-Cooker, Pasta Pot & Steamer  
Insert, 3-Ply Mirror, 8 Qt.

UPC: 840595101665  
Country of Origin: China



**4013-5016**  
Roasting Pan & Nonstick Rack,  
3-Ply Mirror, 16"

UPC: 840595101658  
Country of Origin: China



## Viking® Contemporary 3-Ply Mirror Cookware

Viking® Contemporary 3-Ply Mirror Cookware combines a layer of aluminum sandwiched between heavy-gauge stainless steel for superior performance. The aluminum core provides exceptional heat transfer throughout the pans, while the magnetic stainless steel exterior gives the pans durability and makes them induction capable.

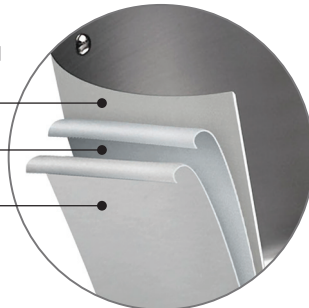
Featuring a seamless rim, the vented glass lids allow you to easily see the progress of your meal while reducing the chance of boil-overs. Viking Contemporary cookware combines a fashionable conic shape with signature stay-cool handles and easy to read internal volume measurements.

### VIKING 3-PLY CONSTRUCTION

18/10 Stainless Steel Interior

Aluminum Alloy Core for  
Even Heat Distribution

Induction Capable Magnetic  
Stainless Steel Exterior





## Viking Contemporary 3-Ply Mirror, 10 Piece Set

**4513-3S10**

Viking Contemporary 3-Ply Mirror, 10 Piece Set

UPC: 840595101399

Country of Origin: China

Set includes: 5.2 Qt. Dutch Oven, 3.6 Qt. Sauté Pan, 3.4 Qt. Sauce Pan, 2.4 Qt. Sauce Pan, 10" Fry Pan & 8" Fry Pan

- Durable Stainless Steel Construction with Aluminum Alloy Core
- Can Be Used On Any Cooking Surface, Including Induction
- Convenient Internal Volume Markings in Both US & Metric Measurements
- Specially Designed Ergonomic Handles Balance the Pan with the Wrist & Forearm, Making Lifting a Full Pan Easy
- Stainless Steel Handles and Rivets, Double-Riveted to Each Vessel
- Oven and Dishwasher Safe
- Limited Lifetime Warranty



## Viking Contemporary 3-Ply Mirror, 7 Piece Set

**4513-3S07**

Viking Contemporary 3-Ply Mirror, 7 Piece Set

UPC: 840595101405

Country of Origin: China

Set includes: 8 Qt. Stock Pot, 3.6 Qt. Sauté Pan, 2.4 Qt. Sauce Pan & 10" Fry Pan

- Durable Stainless Steel Construction with Aluminum Alloy Core
- Can Be Used On Any Cooking Surface, Including Induction
- Convenient Internal Volume Markings in Both US & Metric Measurements
- Specially Designed Ergonomic Handles Balance the Pan with the Wrist & Forearm, Making Lifting a Full Pan Easy
- Stainless Steel Handles and Rivets, Double-Riveted to Each Vessel
- Oven and Dishwasher Safe
- Limited Lifetime Warranty



## Viking Contemporary 3-Ply Mirror, 5 Piece Starter Set

**4513-3S05**

Viking Contemporary 3-Ply Mirror, 5 Piece Starter Set

UPC: 840595101412

Country of Origin: China

Set includes: 5.2 Qt. Dutch Oven, 3.4 Qt. Sauce Pan & 10" Fry Pan

- Durable Stainless Steel Construction with Aluminum Alloy Core
- Can Be Used On Any Cooking Surface, Including Induction
- Convenient Internal Volume Markings in Both US & Metric Measurements
- Specially Designed Ergonomic Handles Balance the Pan with the Wrist & Forearm, Making Lifting a Full Pan Easy
- Stainless Steel Handles and Rivets, Double-Riveted to Each Vessel
- Oven and Dishwasher Safe
- Limited Lifetime Warranty





## Viking Contemporary 3-Ply Mirror, Open Stock



**4013-3002**  
Sauce Pan, Contemporary 3-Ply Mirror,  
2.4 Qt.

UPC: 840595100743  
Country of Origin: China



**4013-3003**  
Sauce Pan, Contemporary 3-Ply Mirror,  
3.4 Qt.

UPC: 840595100767  
Country of Origin: China



**4013-3040**  
Sauté Pan, Contemporary 3-Ply Mirror,  
3.6 Qt.

UPC: 840595100903  
Country of Origin: China



**4013-3060**  
Sauté Pan, Contemporary 3-Ply Mirror,  
4.8 Qt.

UPC: 840595100996  
Country of Origin: China



**4013-3005**  
Dutch Oven, Contemporary 3-Ply Mirror,  
5.2 Qt.

UPC: 840595100781  
Country of Origin: China



**4013-3008**  
Stock Pot, Contemporary 3-Ply Mirror,  
8 Qt.

UPC: 840595100811  
Country of Origin: China



## Viking Contemporary 3-Ply Mirror, Open Stock



**4013-3018**  
Fry Pan, Contemporary 3-Ply Mirror, 8"  
UPC: 840595100583  
Country of Origin: China



**4013-3010**  
Fry Pan, Contemporary 3-Ply Mirror, 10"  
UPC: 840595100651  
Country of Origin: China



**4013-3012**  
Fry Pan, Contemporary 3-Ply Mirror, 12"  
UPC: 840595100675  
Country of Origin: China



**4013-3N18**  
Fry Pan, Nonstick Contemporary  
3-Ply Mirror, 8"  
UPC: 840595101672  
Country of Origin: China



**4013-3N10**  
Fry Pan, Nonstick Contemporary  
3-Ply Mirror, 10"  
UPC: 840595101689  
Country of Origin: China



## Viking® Ceramic Nonstick Bakeware

Coated with an exclusive Exdura Green II ceramic coating, Viking ceramic bakeware is free of PFOA or PTFE chemicals found in other nonstick coatings. Our ceramic coating is naturally stain and scratch resistant. The heavy-gauge carbon steel construction distributes heat more evenly while giving the pan added durability. The dual-sided silicone pads have been built into the handles for added grip when holding or moving the pan. Oven safe to 480 °F (250 °C).

- Eco-Friendly PFOA & PTFE Free Nonstick Bakeware
- Water Based Ceramic Coating Provides Advanced Anti-Adherence
- Heavy Gauge Carbon Steel Construction for Durability & Superior Heat Transfer
- Easy Grip Double Sided Silicone Handles
- Stain & Scratch Resistant
- 2-Year Limited Warranty



**4040-3417-CGY**  
Ceramic Nonstick Baking Tray, 17"  
UPC: 840595100736  
Country of Origin: China

**4040-3414-CGY**  
Ceramic Nonstick Baking Tray, 14"  
UPC: 840595100699  
Country of Origin: China

**4040-3413-CGY**  
Ceramic Nonstick Baking Tray, 13"  
UPC: 840595100507  
Country of Origin: China



**4040-3512-CGY**  
Ceramic Nonstick Muffin Pan, 12 Cup  
UPC: 840595100873  
Country of Origin: China

**4040-3506-CGY**  
Ceramic Nonstick Muffin Pan, 6 Cup  
UPC: 840595100835  
Country of Origin: China



**4040-3314-CGY**  
Ceramic Nonstick Roast Pan, 14"  
UPC: 840595100453  
Country of Origin: China



**4040-3313-CGY**  
Ceramic Nonstick Roast Pan, 13"  
UPC: 840595100446  
Country of Origin: China

**4040-3212-CGY**  
Ceramic Nonstick Loaf Pan, 12"  
UPC: 840595100439  
Country of Origin: China

**4040-3210-CGY**  
Ceramic Nonstick Loaf Pan, 10"  
UPC: 840595100408  
Country of Origin: China

**4040-3208-CGY**  
Ceramic Nonstick Loaf Pan, 8"  
UPC: 840595100385  
Country of Origin: China



**4040-3611-CGY**  
Ceramic Nonstick Flan Tin, 11"  
UPC: 840595100941  
Country of Origin: China



**4040-3409CGY**  
Ceramic Nonstick Square Cake Pan, 9"  
UPC: 840595100484  
Country of Origin: China



**4040-3709-CGY**  
Ceramic Nonstick Round Cake Pan, 9"  
UPC: 840595101634  
Country of Origin: China

## Viking® Professional Steakhouse Style Knife Set

Each restaurant grade knife is expertly honed from durable German stainless steel – the standard in quality blade material. The unique Pakkawood handles are double-riveted around the full tang construction, giving the knife a well balanced feel and comfortable hold. Each water and stain resistant Pakkawood handle has a unique design due to the construction of this renewable material.

- Set of 6 Steakhouse Style Steak Knives with Bamboo Gift Box
- 5" Mirror Polished Blade
- Corrosion & Stain Resistant 18/10 German Steel
- Partially Serrated Blades Slice Easily Through Thick or Thin Steaks
- Double Riveted Water & Stain Resistant Pakkawood Handles
- Durable Full Tang Construction with Bolster
- Limited Lifetime Warranty



### 4531-1170-BPAK

Pakkawood Steakhouse Style Steak Knife Set, with Box, 6 Pieces, Black  
UPC: 840595100576  
Country of Origin: China



### 4531-1170-RPAK

Pakkawood Steakhouse Style Steak Knife Set, with Box, 6 Pieces, Red  
UPC: 840595100569  
Country of Origin: China



## Viking® Pressure Cooker

The Viking Pressure Cooker uses a simple non-slip lock knob to easily and securely clamp the lid down on the vessel. Set the lid on in any direction you wish, then just turn the knob to create a pressure safe seal and you are ready to cook.

- Open & Close the Lid with the Turn of a Knob
- Can Be Used on any Cooking Surface, Including Induction
- Energy Saving – Reduces Cooking Time by Half or More
- Pressure Release Dial Allows You to Easily Adjust the Pressure
- Durable Stainless Steel Construction
- Pressure Indicator Identifies when the Cooker has Reached Full Pressure
- Stay Cool Handles



**4050-28QBLK**  
Pressure Cooker, 7.5 Qt., Black  
Country of Origin: China

**Please Note: Assortments, specifications and pricing are subject to change without notice.**





## About Clipper

Clipper is a professional cookware provider delivering quality products to commercial customers for over 20 years. From cookware and smallwares to textiles, Clipper has an established reputation as a reliable resource helping customers develop and extend their brand. Clipper is a partner to major brands, including Capital Grille, Denny's, Yum Brands, Darden Restaurants, UPS, California Pizza Kitchen, TGI Fridays and many more.

Clipper has a proven track record of leveraging their extraordinary worldwide sourcing team to bring commercial grade products to both business and the home users both within the foodservice industry and through Clipper's own consumer brands.

Viking has chosen Clipper as their Culinary partner based on their core strengths, experience and results driven philosophy.

## Our Brands



A full line of professional cookware, bakeware, and cutlery that are engineered to last a lifetime.



A full line of cookware, bakeware, and kitchen gadgets designed to empower home cooks.



A full line of cookware, bakeware, and kitchen gadgets inspired by the adrenaline packed culinary competition show.



With shelf placement in some of America's top retailers, this brand harnesses the quality of Clipper's cookware and foodservice items and packages them for home use.



A line of distinctive cast aluminum cookware that redefines the category by providing innovative solutions in a space where innovation is rare.



A full line of cookware, tools and gadgets that are engineered with both value and durability in mind.



Clipper Corporation • 21124 Figueroa Street • Carson, CA 90745  
vikingculinaryproducts.com • vikingsales@clippercorp.com  
877.533.2547