



2014 Viking Housewares



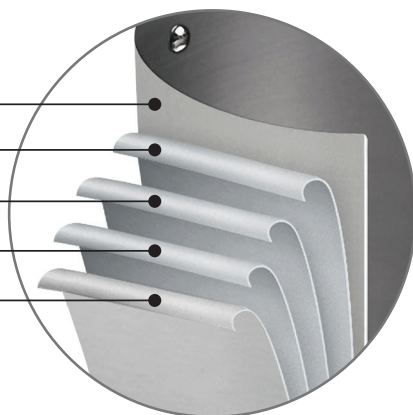


Table of Contents

Viking 5-Ply Professional Cookware	1
Viking 3-Ply Cookware	6
Viking 3-Ply Contemporary Cookware	15
Viking Ceramic Non-Stick Bakeware	21
Viking Professional Steakhouse Style Knife Sets	23
Viking Professional Pressure Cooker	24
About Clipper Corporation	25

VIKING PROFESSIONAL 5-PLY CONSTRUCTION

18/10 Stainless Steel Interior
Aluminum Alloy Core
Pure Aluminum Core
Aluminum Alloy Core
Induction Capable Magnetic
Stainless Steel Exterior



Please Note: Assortments, specifications and pricing are subject to change without notice.



Viking® 5-Ply Professional Cookware

Viking® 5-Ply Professional Cookware provides commercial grade quality for in-home use. With an elegant satin finish and five layers of metal, this premium line of cookware is specially handcrafted in the USA.

5-ply construction maximizes heat transfer and reduces energy usage, features that enable Viking cookware to deliver superior cooking performance. Each layer of metal is created to provide durability and efficiency. The exterior layer is a magnetic stainless steel that makes the cookware suitable for induction stovetops. The next layer of aluminum alloy bonds to the middle layer, which is pure 3004 aluminum. The fourth layer is an aluminum alloy bonded to the interior 18/10 high-grade stainless steel. Together, these five layers work in unison to transfer heat quickly and evenly while using less energy to achieve desired cooking temperatures.

The middle layer of pure aluminum is the key ingredient to the efficiency of this cookware as aluminum is one of the most conductive metals used in cooking. The aluminum core will transfer the heat evenly through both the bottom and sides of the pan, maximizing the utility of all of the cooking surfaces.

The non-reactive and non-porous inner layer of stainless steel combines with the efficiency of the core to make an ideal cooking surface that is easy to clean and sanitize. The 5-ply construction makes this cookware stove, oven and grill friendly. Viking designed the stay-cool handles to be ergonomically friendly, making the cookware more comfortable to hold and maneuver. Backed by a lifetime warranty.



Viking Professional 5-Ply Satin, 10 Piece Set

4515-1S10S

Viking Professional 5-Ply Satin, 10 Piece Set

UPC: 840595101276

Country of Origin: USA

Set includes: 8 Qt. Stock Pot, 3.4 Qt. Sauté Pan, 3 Qt. Sauce Pan, 2 Qt. Sauce Pan, 10" Fry Pan & 8" Fry Pan

- Handcrafted in the USA
- Durable 18/10 Stainless Steel Exterior Sandwiches an Aluminum Core for Superior Heat Transfer
- Magnetic Exterior Can Be Used on Any Cooking Surface, Including Induction
- Ergonomically Designed Cast Stainless Steel Handles Provide a Comfortable & Secure Grip
- Commercial Grade Riveted Handles with Solid Stainless Steel Rivets
- Non-Stick Products Feature Eterna®, an Advanced PFOA Free Coating for Superior Release
- Oven & Dishwasher Safe
- Lifetime Warranty



Made in USA • Lifetime Warranty



Viking Professional 5-Ply Satin, 7 Piece Set

4515-1S07S

Viking Professional 5-Ply Satin, 7 Piece Set

UPC: 840595101269

Country of Origin: USA

Set includes: 8 Qt. Stock Pot, 3.4 Qt. Sauté Pan, 2 Qt. Sauce Pan & 10" Fry Pan

- Handcrafted in the USA
- Durable 18/10 Stainless Steel Exterior Sandwiches an Aluminum Core for Superior Heat Transfer
- Magnetic Exterior Can Be Used on Any Cooking Surface, Including Induction
- Ergonomically Designed Cast Stainless Steel Handles Provide a Comfortable & Secure Grip
- Commercial Grade Riveted Handles with Solid Stainless Steel Rivets
- Non-Stick Products Feature Eterna®, an Advanced PFOA Free Coating for Superior Release
- Oven & Dishwasher Safe
- Lifetime Warranty



Made in USA • Lifetime Warranty



Viking Professional 5-Ply Satin, Open Stock



4015-1002S

Sauce Pan, 5-Ply Satin, 2 Qt.

UPC: 840595101122

Country of Origin: USA



4015-1003S

Sauce Pan, 5-Ply Satin, 3 Qt.

UPC: 840595101139

Country of Origin: USA



4015-1034S

Sauté Pan, 5-Ply Satin, 3.4 Qt.

UPC: 840595101191

Country of Origin: USA



4015-1064S

Sauté Pan, 5-Ply Satin, 6.4 Qt.

UPC: 840595101207

Country of Origin: USA



4015-1006S

Stock Pot, 5-Ply Satin, 6 Qt.

UPC: 840595101146

Country of Origin: USA



4015-1008S

Stock Pot, 5-Ply Satin, 8 Qt.

UPC: 840595101153

Country of Origin: USA

Viking Professional 5-Ply Satin, Open Stock



4015-1034CS
Casserole, 5-Ply, 3.4 Qt.
UPC: 840595101245
Country of Origin: USA



4015-1064CS
Casserole, 5-Ply Satin, 6.4 Qt.
UPC: 840595101252
Country of Origin: USA



4015-1018S
Fry Pan, 5-Ply Satin, 8"
UPC: 840595101160
Country of Origin: USA



4015-1010S
Fry Pan, 5-Ply Satin, 10"
UPC: 840595101177
Country of Origin: USA



4015-1012S
Fry Pan, 5-Ply Satin, 12"
UPC: 840595101184
Country of Origin: USA



4015-1N18S
Fry Pan, Non-Stick, 5-Ply Satin, 8"
UPC: 840595101214
Country of Origin: USA



4015-1N10S
Fry Pan, Non-Stick, 5-Ply Satin, 10"
UPC: 840595101221
Country of Origin: USA



4015-1N12S
Fry Pan, Non-Stick, 5-Ply Satin, 12"
UPC: 840595101238
Country of Origin: USA



Viking® 3-Ply Cookware

Viking® 3-Ply Cookware is designed for the culinary enthusiast desiring professional quality results. Handcrafted in the USA, Viking cookware is beautifully polished to a mirror finish.

The 3-ply clad design combines three layers of metal to create one solid piece that is formed into the vessel. An induction capable stainless steel exterior is bonded to a layer of aluminum alloy and then finished with a final layer of high quality 18/10 stainless steel on the interior. The three-layer construction combines the durability of stainless with the superior conductivity of aluminum, delivering even heat distribution along the bottom and throughout the sides of the pan. With three layers of metal combined, the unique structure creates a comprehensive heat delivery system that requires less energy to both heat and maintain even temperature throughout the pan.

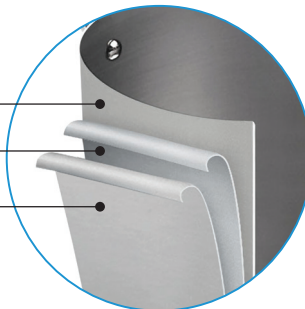
Viking stainless steel is non-reactive and features a non-porous surface so that it is easy to clean and sanitize. Holding and maneuvering the pan during cooking is made easier with our comfortable to hold, ergonomically designed, stay-cool handles. Backed by a lifetime warranty.

VIKING 3-PLY CONSTRUCTION

18/10 Stainless Steel Interior

Aluminum Alloy Core for
Even Heat Distribution

Induction Capable Magnetic
Stainless Steel Exterior





Viking 3-Ply Mirror, 14 Piece Set

4513-2S14

Viking 3-Ply Mirror, 14 Piece Set

UPC: 840595100804

Country of Origin: USA

Set includes: 8 Qt. Stock Pot, 6 Qt. Stock Pot, 6.4 Qt. Sauté Pan, 3.4 Qt. Sauté Pan, 3 Qt. Sauce Pan, 2 Qt. Sauce Pan, 12" Fry Pan & 10" Fry Pan

- Handcrafted in the USA
- Durable 18/10 Stainless Steel Vessel with Aluminum Alloy Core
- 3-Ply Construction Transfers Heat Evenly Across the Bottom & Sides of Pan
- Magnetic Exterior Can Be Used on Any Cooking Surface, Including Induction
- Ergonomically Designed Stay-Cool Handles for Comfort & Balance
- Commercial Grade Stainless Steel Rivets & Handles
- Non-Stick Products Feature Eterna®, an Advanced PFOA Free Coating for Superior Release
- Oven & Dishwasher Safe
- Lifetime Warranty



Made in USA • Lifetime Warranty



Viking 3-Ply Mirror, 10 Piece Set

4513-2S10

Viking 3-Ply Mirror, 10 Piece Set

UPC: 840595100538

Country of Origin: USA

Set includes: 8 Qt. Stock Pot, 3.4 Qt. Sauté Pan, 3 Qt. Sauce Pan, 2 Qt. Sauce Pan, 10" Fry Pan & 8" Fry Pan

- Handcrafted in the USA
- Durable 18/10 Stainless Steel Vessel with Aluminum Alloy Core
- 3-Ply Construction Transfers Heat Evenly Across the Bottom & Sides of Pan
- Magnetic Exterior Can Be Used on Any Cooking Surface, Including Induction
- Ergonomically Designed Stay-Cool Handles for Comfort & Balance
- Commercial Grade Stainless Steel Rivets & Handles
- Non-Stick Products Feature Eterna®, an Advanced PFOA Free Coating for Superior Release
- Oven & Dishwasher Safe
- Lifetime Warranty



Made in USA • Lifetime Warranty



Viking 3-Ply Mirror, 7 Piece Set

4513-2S07

Viking 3-Ply Mirror, 7 Piece Set

UPC: 840595100521

Country of Origin: USA

Set includes: 8 Qt. Stock Pot, 6.4 Qt. Sauté Pan, 2 Qt. Sauce Pan & 10" Fry Pan

- Handcrafted in the USA
- Durable 18/10 Stainless Steel Vessel with Aluminum Alloy Core
- 3-Ply Construction Transfers Heat Evenly Across the Bottom & Sides of Pan
- Magnetic Exterior Can Be Used on Any Cooking Surface, Including Induction
- Ergonomically Designed Stay-Cool Handles for Comfort & Balance
- Commercial Grade Stainless Steel Rivets & Handles
- Non-Stick Products Feature Eterna®, an Advanced PFOA Free Coating for Superior Release
- Oven & Dishwasher Safe
- Lifetime Warranty



Made in USA • Lifetime Warranty



Viking 3-Ply Mirror, 5 Piece Starter Set

4513-2S05

Viking 3-Ply Mirror, 5 Piece Starter Set

UPC: 840595100514

Country of Origin: USA

Set includes: 6 Qt. Stock Pot, 3 Qt. Sauce Pan & 10" Fry Pan

- Handcrafted in the USA
- Durable 18/10 Stainless Steel Vessel with Aluminum Alloy Core
- 3-Ply Construction Transfers Heat Evenly Across the Bottom & Sides of Pan
- Magnetic Exterior Can Be Used on Any Cooking Surface, Including Induction
- Ergonomically Designed Stay-Cool Handles for Comfort & Balance
- Commercial Grade Stainless Steel Rivets & Handles
- Non-Stick Products Feature Eterna,[®] an Advanced PFOA Free Coating for Superior Release
- Oven & Dishwasher Safe
- Lifetime Warranty



Made in USA • Lifetime Warranty



Viking 3-Ply Mirror, Open Stock



4013-2002
Sauce Pan, 3-Ply Mirror, 2 Qt.
UPC: 840595100156
Country of Origin: USA



4013-2003
Sauce Pan, 3-Ply Mirror, 3 Qt.
UPC: 840595100163
Country of Origin: USA



4013-2034
Sauté Pan, 3-Ply Mirror, 3.4 Qt.
UPC: 840595100309
Country of Origin: USA



4013-2064
Sauté Pan, 3-Ply Mirror, 6.4 Qt.
UPC: 840595100323
Country of Origin: USA



4013-2006
Stock Pot, 3-Ply Mirror, 6 Qt.
UPC: 840595100170
Country of Origin: USA



4013-2008
Stock Pot, 3-Ply Mirror, 8 Qt.
UPC: 840595100293
Country of Origin: USA



Viking 3-Ply Mirror, Open Stock



4013-2034C
Casserole, 3-Ply Mirror, 3.4 Qt.
UPC: 840595100491
Country of Origin: USA



4013-2064C
Casserole, 3-Ply Mirror, 6.4 Qt.
UPC: 840595101115
Country of Origin: USA



4013-2030SI
Steamer Insert, 3-Ply Mirror, 3 Qt.
UPC: 840595101429
Country of Origin: USA



4013-2030DB
Double Boiler Insert, 3-Ply Mirror, 3 Qt.
UPC: 840595101436
Country of Origin: USA



4013-2018
Fry Pan, 3-Ply Mirror, 8"
UPC: 840595100347
Country of Origin: USA



4013-2010
Fry Pan, 3-Ply Mirror, 10"
UPC: 840595100361
Country of Origin: USA



Viking 3-Ply Mirror, Open Stock



4013-2012
Fry Pan, 3-Ply Mirror, 12"
UPC: 840595100392
Country of Origin: USA



4013-2N18
Fry Pan, Non-Stick, 3-Ply Mirror, 8"
UPC: 840595100415
Country of Origin: USA



4013-2N10
Fry Pan, Non-Stick, 3-Ply Mirror, 10"
UPC: 840595100422
Country of Origin: USA



4013-2N12
Fry Pan, Non-Stick, 3-Ply Mirror, 12"
UPC: 840595100460
Country of Origin: USA



Viking 3-Ply Mirror, Open Stock



4013-6008

Multi-Cooker, Pasta Pot & Steamer Insert, 3-Ply Mirror, 8 Qt.

UPC: 840595101665

Country of Origin: China



4013-5016

Roasting Pan & Non-Stick Rack, 3-Ply Mirror, 16"

UPC: 840595101658

Country of Origin: China



Viking® Contemporary 3-Ply Cookware

Viking® Contemporary 3-Ply Cookware combines a layer of aluminum sandwiched between heavy-gauge stainless steel for superior performance. The aluminum core provides exceptional heat transfer throughout the pans, while the magnetic stainless steel exterior gives the pans durability and makes them induction capable.

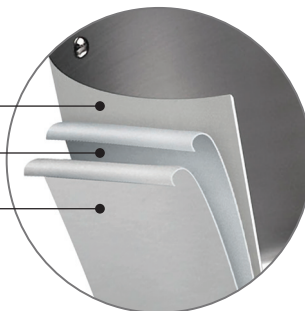
Featuring a seamless rim, the vented glass lids allow you to easily see the progress of your meal while reducing the chance of boil-overs. Viking Contemporary cookware combines a fashionable conic shape with signature stay-cool handles and easy to read internal volume measurements.

VIKING 3-PLY CONSTRUCTION

18/10 Stainless Steel Interior

Aluminum Alloy Core for
Even Heat Distribution

Induction Capable Magnetic
Stainless Steel Exterior





Viking Contemporary 3-Ply Mirror, 10 Piece Set

4513-3S10

Viking Contemporary 3-Ply Mirror, 10 Piece Set

UPC: 840595101399

Country of Origin: China

Set includes: 5.2 Qt. Dutch Oven, 3.6 Qt. Sauté Pan, 3.4 Qt. Sauce Pan, 2.4 Qt. Sauce Pan, 10" Fry Pan & 8" Fry Pan

- Durable 18/10 Stainless Steel
- Can Be Used On Any Cooking Surface, Including Induction
- Convenient Internal Volume Markings in Both US & Metric Measurements
- Specially Designed Ergonomic Handles Balance the Pan with the Wrist & Forearm, Making Lifting a Full Pan Easy
- Stainless Steel Handles and Rivets, Double-Riveted to Each Vessel
- Oven and Dishwasher Safe
- Limited Lifetime Warranty



Viking Contemporary 3-Ply Mirror, 7 Piece Set

4513-3S07

Viking Contemporary 3-Ply Mirror, 7 Piece Set

UPC: 840595101405

Country of Origin: China

Set includes: 8 Qt. Stock Pot, 3.4 Qt. Sauté Pan, 2.4 Qt. Sauce Pan & 10" Fry Pan

- Durable 18/10 Stainless Steel
- Can Be Used On Any Cooking Surface, Including Induction
- Convenient Internal Volume Markings in Both US & Metric Measurements
- Specially Designed Ergonomic Handles Balance the Pan with the Wrist & Forearm, Making Lifting a Full Pan Easy
- Stainless Steel Handles and Rivets, Double-Riveted to Each Vessel
- Oven and Dishwasher Safe
- Limited Lifetime Warranty



Viking Contemporary 3-Ply Mirror, 5 Piece Starter Set

4513-3S05

Viking Contemporary 3-Ply Mirror, 5 Piece Starter Set

UPC: 840595101412

Country of Origin: China

Set includes: 5.2 Qt. Dutch Oven, 3.4 Qt. Sauce Pan & 10" Fry Pan

- Durable 18/10 Stainless Steel
- Can Be Used On Any Cooking Surface, Including Induction
- Convenient Internal Volume Markings in Both US & Metric Measurements
- Specially Designed Ergonomic Handles Balance the Pan with the Wrist & Forearm, Making Lifting a Full Pan Easy
- Stainless Steel Handles and Rivets, Double-Riveted to Each Vessel
- Oven and Dishwasher Safe
- Limited Lifetime Warranty



Viking Contemporary 3-Ply Mirror, Open Stock



4013-3002

Sauce Pan, Contemporary 3-Ply Mirror,
2.4 Qt.

UPC: 840595100743

Country of Origin: China



4013-3003

Sauce Pan, Contemporary 3-Ply Mirror,
3.4 Qt.

UPC: 840595100767

Country of Origin: China



4013-3040

Sauté Pan, Contemporary 3-Ply Mirror,
3.6 Qt.

UPC: 840595100903

Country of Origin: China



4013-3060

Sauté Pan, Contemporary 3-Ply Mirror,
4.8 Qt.

UPC: 840595100996

Country of Origin: China



4013-3005

Dutch Oven, Contemporary 3-Ply Mirror,
5.2 Qt.

UPC: 840595100781

Country of Origin: China



4013-3008

Stock Pot, Contemporary 3-Ply Mirror,
8 Qt.

UPC: 840595100811

Country of Origin: China



Viking Contemporary 3-Ply Mirror, Open Stock



4013-3018

Fry Pan, Contemporary 3-Ply Mirror, 8"

UPC: 840595100583

Country of Origin: China



4013-3010

Fry Pan, Contemporary 3-Ply Mirror, 10"

UPC: 840595100651

Country of Origin: China



4013-3012

Fry Pan, Contemporary 3-Ply Mirror, 12"

UPC: 840595100675

Country of Origin: China



Viking Ceramic Non-Stick Bakeware

Coated with an exclusive Exdura Green II ceramic coating, Viking ceramic bakeware is free of PFOA or PTFE chemicals found in other non-stick coatings. Our ceramic coating is naturally stain and scratch resistant. The heavy-gauge carbon steel construction distributes heat more evenly while giving the pan added durability. The dual-sided silicone pads have been built into the handles for added grip when holding or moving the pan. Oven safe to 480 °F (250 °C).

- Eco-Friendly PFOA & PTFE Free Non-Stick Bakeware
- Water Based Ceramic Coating Provides Advanced Anti-Adherence
- Heavy Gauge Carbon Steel Construction for Durability & Superior Heat Transfer
- Easy Grip Double Sided Silicone Handles
- Stain & Scratch Resistant
- 2-Year Limited Warranty



4040-3417-CGY
Ceramic Non-Stick Baking Tray, 17"
UPC: 840595100736
Country of Origin: China

4040-3414-CGY
Ceramic Non-Stick Baking Tray, 14"
UPC: 840595100699
Country of Origin: China

4040-3413-CGY
Ceramic Non-Stick Baking Tray, 13"
UPC: 840595100507
Country of Origin: China



4040-3512-CGY
Ceramic Non-Stick Muffin Pan, 12 Cup
UPC: 840595100873
Country of Origin: China

4040-3506-CGY
Ceramic Non-Stick Muffin Pan, 6 Cup
UPC: 840595100835
Country of Origin: China



4040-3314-CGY
Ceramic Non-Stick Roast Pan, 14"
UPC: 840595100453
Country of Origin: China



4040-3212-CGY
Ceramic Non-Stick Loaf Pan, 12"
UPC: 840595100439
Country of Origin: China

4040-3210-CGY
Ceramic Non-Stick Loaf Pan, 10"
UPC: 840595100408
Country of Origin: China

4040-3208-CGY
Ceramic Non-Stick Loaf Pan, 8"
UPC: 840595100385
Country of Origin: China



4040-3611-CGY
Ceramic Non-Stick Flan Tin, 11"
UPC: 840595100941
Country of Origin: China



4040-3409CGY
Ceramic Non-Stick Square Cake Pan, 9"
UPC: 840595100484
Country of Origin: China



4040-3709-CGY
Ceramic Non-Stick Round Cake Pan, 9"
UPC: 840595101634
Country of Origin: China

Viking Professional Steakhouse Style Knife Set

Each restaurant grade knife is expertly honed from durable German stainless steel – the standard in quality blade material. The unique Pakkawood handles are double-riveted around the full tang construction, giving the knife a well balanced feel and comfortable hold. Each water and stain resistant Pakkawood handle has a unique design due to the construction of this renewable material.

- Set of 6 Steakhouse Style Steak Knives with Bamboo Gift Box
- 5" Mirror Polished Blade
- Corrosion & Stain Resistant 18/10 German Steel
- Partially Serrated Blades Slice Easily Through Thick or Thin Steaks
- Double Riveted Water & Stain Resistant Pakkawood Handles
- Durable Full Tang Construction with Bolster
- Limited Lifetime Warranty



4531-1170-BPAK

Pakkawood Steakhouse Style Steak Knife Set, with Box, 6 Pieces, Black

UPC: 840595100576

Country of Origin: China



4531-1170-RPAK

Pakkawood Steakhouse Style Steak Knife Set, with Box, 6 Pieces, Red

UPC: 840595100569

Country of Origin: China



Viking Professional Pressure Cooker

The Viking Pressure Cooker uses a simple lock/unlock function to securely clamp the lid down on the vessel. Set the lid on in any direction you wish, then just push the lock button to create a pressure safe seal and you are ready to cook.

- Open & Close the Lid with the Touch of a Button
- Can Be Used on any Cooking Surface, Including Induction
- Energy Saving – Reduces Cooking Time by Half or More
- Pressure Release Dial Allows You to Easily Adjust the Pressure
- Durable Stainless Steel Construction
- Pressure Indicator Identifies when the Cooker has Reached Full Pressure



4050-28QBLK
Pressure Cooker, 8 Qt., Black
Country of Origin: China

4050-28QCHP
Pressure Cooker, 8 Qt., Champagne
Country of Origin: China

Please Note: Assortments, specifications and pricing are subject to change without notice.



About Clipper

Clipper is a professional cookware provider delivering quality products to commercial customers for over 20 years. From cookware and smallwares to textiles, Clipper has an established reputation as a reliable resource helping customers develop and extend their brand. Clipper is a partner to major brands, including Capital Grille, Denny's, Yum Brands, Darden Restaurants, UPS, California Pizza Kitchen, TGI Fridays and many more.

Clipper has a proven track record of leveraging their extraordinary worldwide sourcing team to bring commercial grade products to both business and the home users both within the foodservice industry and through Clipper's own consumer brands.

Viking has chosen Clipper as their Culinary partner based on their core strengths, experience and results driven philosophy.

Our Brands



A full line of professional cookware, bakeware, and cutlery that are engineered to last a lifetime.



With shelf placement in some of America's top retailers, this brand harnesses the quality of Clipper's cookware and foodservice items and packages them for home use.



A line of distinctive cast aluminum cookware that redefines the category by providing innovative solutions in a space where innovation is rare.



A full line of cookware, tools and gadgets that are engineered with both value and durability in mind.



Clipper Corporation • 21124 Figueroa Street • Carson, CA 90745
vikingculinaryproducts.com • vikingsales@clippercorp.com
877.533.2547